

**Geothermal System Donors
and Volunteer Workers:**

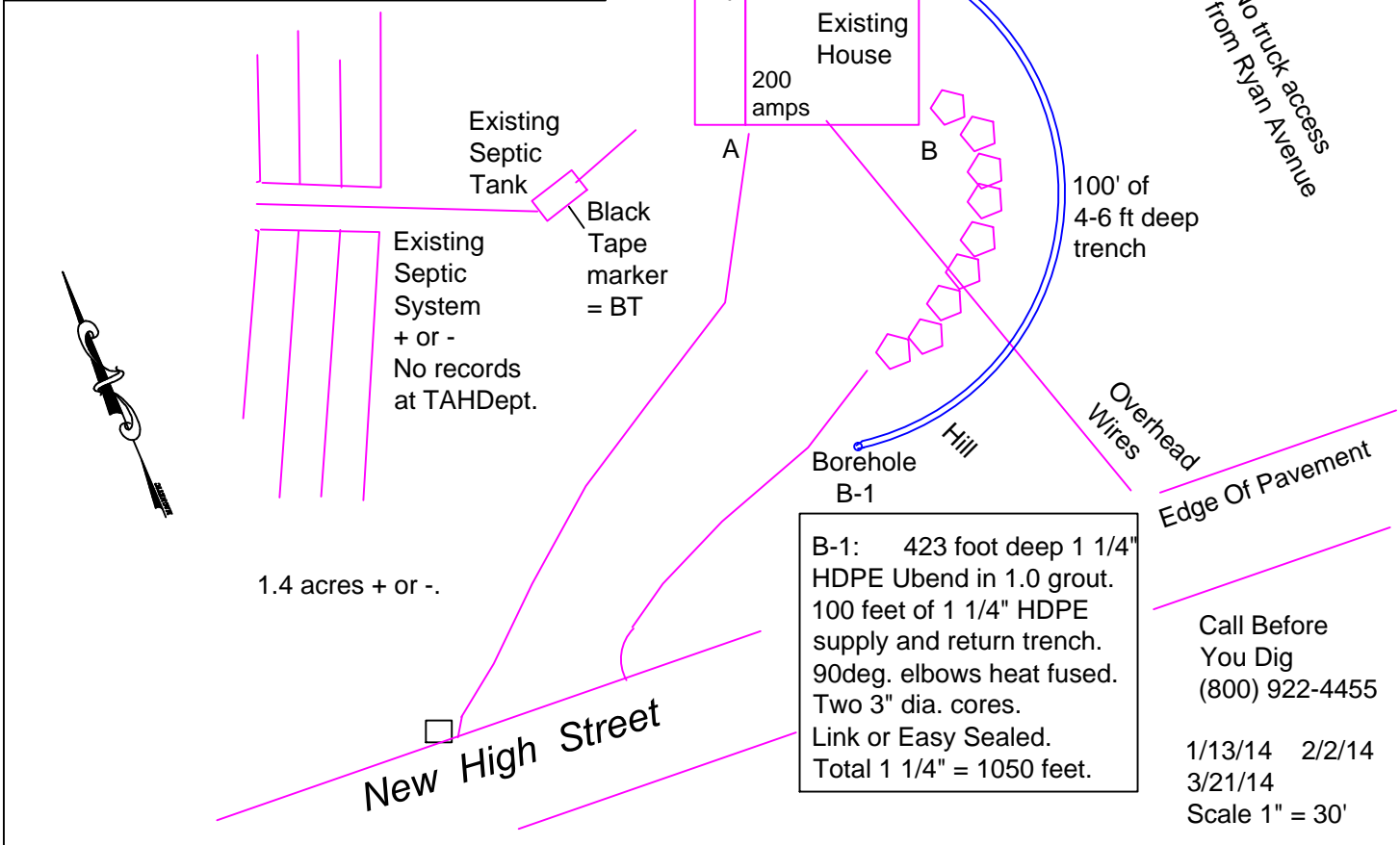
WaterFurnace International - Series 5 Heat Pump
 Blake Equipment -Loop Pipe, Fittings, Water Heater
 and B&D Flow Center
 CT Valley Artesian Wells- Drilling 423' Borehole
 Morris Industries, Inc. - 40' of 6" Steel Casing
 Victory Steel - 100' of 6" Steel Casing
 Sima Drilling- Install Loop in Bore & Grout Bore
 Preferred Pump- Grout and Silica Sand
 John Considine - 100' long Trench Excavation
 A&B Cooling & Heating Corp. - Trench Loop,
 Set up 3 ton Heat Pump & Start Check
 Hydro-Dynamic Engineering- Flush & Purge Loop
 and Donate and Install PG Antifreeze
 Ground Energy Support- Geo Monitoring System
 Nutmeg Mechanical- Design & Aeroseal Ducts
 Stafford Mechanical- Interior Piping
 Geo Source Systems- Thermostats & V. I. P.
 Litchfield Geothermal-Trench Supervision,
 Coordination of Contractors, & Habitat Liaison.

Habitat for Humanity - Residential Retrofit Project
 9 New High Street, North Canaan, Connecticut 06018

**Ground Source Heating & Cooling
 GeoExchange Borehole Site Plan**

A Community Service Project by the
Connecticut Geothermal Association
www.GeothermalConnecticut.org

Tape measured
 distances:
 A to BT = 31'
 B to BT = 57'
 C to BT = 64'
 A to BH-1 = 54'
 B to BH-1 = 52'
 A to mailbox = 102'
 B-1 to EOPvmt = 22'
 BT to BH-1 = 60' > 50'



B-1: 423 foot deep 1 1/4" HDPE U bend in 1.0 grout. 100 feet of 1 1/4" HDPE supply and return trench. 90deg. elbows heat fused. Two 3" dia. cores. Link or Easy Sealed. Total 1 1/4" = 1050 feet.

Call Before You Dig
 (800) 922-4455
 1/13/14 2/2/14
 3/21/14
 Scale 1" = 30'